



Do people know about and how do they use **Martha's Rule**

A Research Study

Participant Information Sheet EasyRead Version



This easy read information is about the Martha's Rule research study. A research study is to find out more about something.



You are getting this information because you recently stayed in hospital and you contacted the research team after seeing an advert about the study.



Thank you for completing the first set of questions. We would now like to interview you to find out more about your experience whilst you were in hospital.



If you have any questions, please ask the researcher who sent you this information.

What is the study about?



The study is about Martha's Rule. We want to look at how it is being rolled out in 3 different hospital trusts in England.

Martha's Rule is about giving patients and their families an easy way of asking for advice or a medical review in hospital.

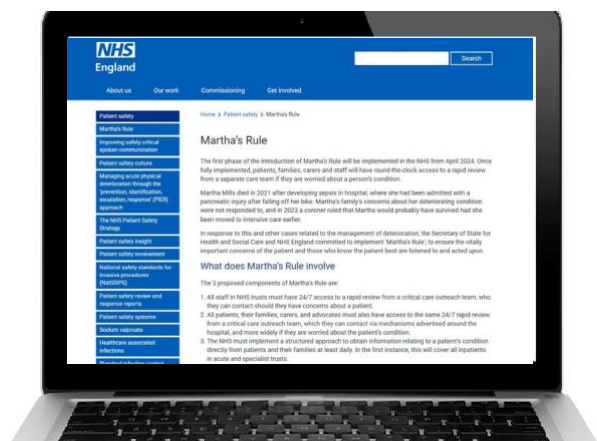


If you or your loved one is getting more poorly and you feel you are not being listened to, you can ask for a review.



A nurse or doctor from a different team normally called a critical care outreach team will do the review.

Martha's Rule also involves healthcare staff having to ask patients and their families about their condition at least once a day.



You can find out more by clicking this link

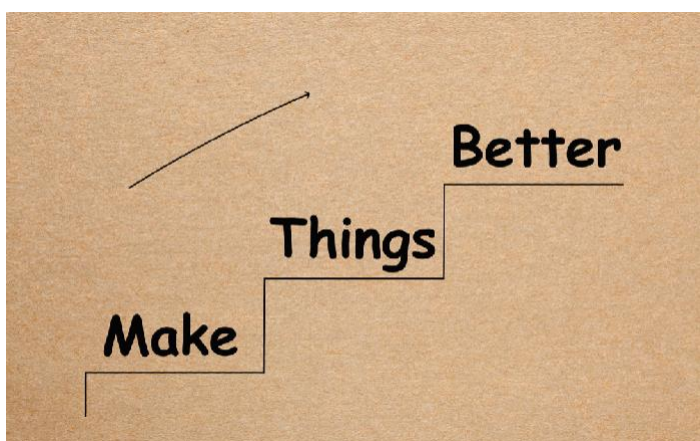
<https://www.england.nhs.uk/patient-safety/marthas-rule/>



We are inviting a small number of patients and family members to take part in an interview. This is to understand your views about Martha's Rule. We also want to know about your experience of being asked about your condition every day.



We might also ask you some questions about how you raise concerns about your or your loved one's care.



The aim of the research is to make the service and support available to people better.

It is also to help healthcare providers and policy makers develop Martha's Rule further.

Who is carrying out the study?



The study is led by Professors Rebecca Lawton and Beth Fylan. It is funded by the National Institute of Health Research (NIHR) and the Department of Health and Social Care.



The interviews are being carried out by researchers from the NIHR Quality Safety Outcomes Policy Research Unit and Yorkshire Quality and Safety Research Group.

What will taking part in the study involve?



If you decide to take part, a member of the research team will interview you.

They will ask you to talk about your or your loved one's healthcare experience in your own words. They will also ask what you think about Martha's Rule.

You can have a family member, friend or support worker with you if you want to.



The interview will be at a time suitable for you. It can be in person or online by Zoom, Teams or FaceTime. It could also be over the phone.

It may be possible to do the interview in your home, please let the researcher know if you would like to do this.



The interview will usually take between 30 and 60 minutes (half an hour to an hour).

If it needs to be longer than this we will ask your permission.



The interviews will be audio-recorded. This means sound only.

This is so the researcher can concentrate on what you are saying and not have to write things down during the interview.



You do not have to answer any questions you don't want to. You can also stop or pause the interview at any time.

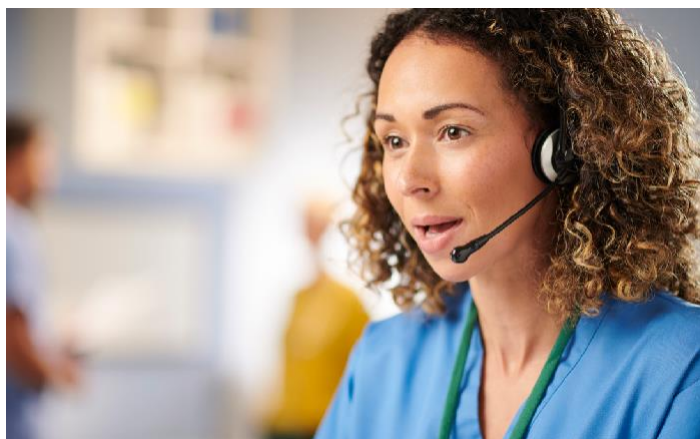
When the interview is over the researcher will tell you what will happen with the information you have told them.

You can ask them questions at any time.

We will give you a £15 shopping voucher after the interview to say thank you for your time.



Do I have to take part?



No, it is up to you whether you take part or not.

If you would like more information about the study or interview then contact the researcher who has sent you this information sheet.



Taking part will not affect the care or treatment you get from your healthcare provider.

If you decide to take part then change your mind, you can stop at any time without giving a reason.

The researcher won't contact you again.

What will happen to the information I give you?

Is the study confidential?



This study will help healthcare providers in the NHS to improve patient safety.

It will also make sure they can support the needs of a wide range of people to know about Martha's Rule.

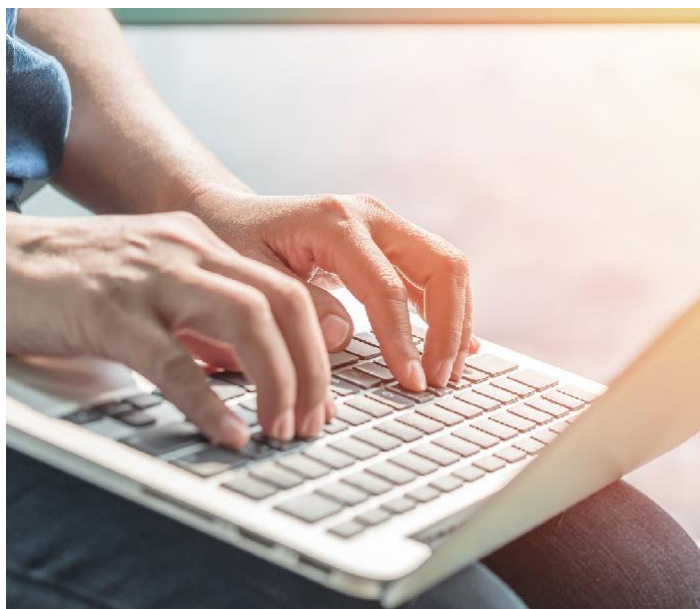
CONFIDENTIAL

There is a Data Controller for this study. This means someone is in charge of looking after your information and using it properly.

Everything you tell us will be strictly confidential. You will not be identified in any of the reports or results.



There may be times that the researcher has to break confidentiality, but they will tell you first.



Nobody outside the research team will be able to trace anything you say in the interview back to you. The interviews will be typed up by professionals.



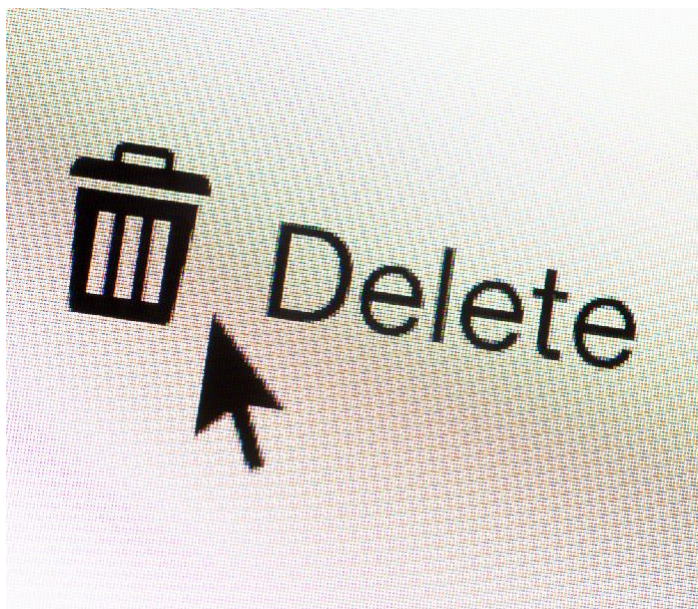
They have all signed confidentiality agreements with us.

The data from this study will not include your name or anything else that could identify you.



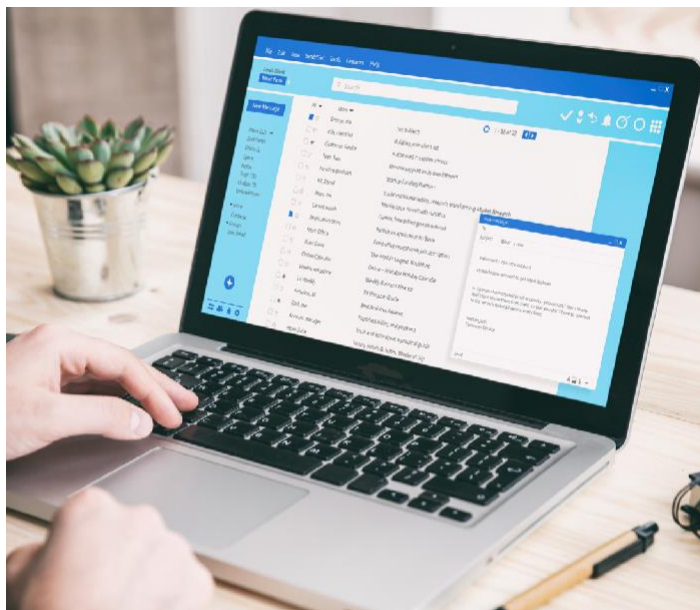
Files and recordings will be stored on our computer network. They will have a password to protect them.

Your personal details like your name and address will be kept in a different place to the other study information.



We will keep your details for 1 year after the end of the study so we can send you the results.

All other study information will be destroyed 10 years after the end of the study.



If you want to find out more about how your information is used you can:

- Click on this link <https://www.hra.nhs.uk/information-about-patients/>
- Ask one of the research team
- Send an email to Jane Dennison, jane.dennison@bthft.nhs.uk



When the study has finished the results will be published in scientific journals and shown at conferences.

This is so that NHS healthcare organisations, professionals and others can learn from it.

Your personal information will not be included in the study reports.



What do I do if I want to take part?

One of the research team will contact you to ask if you want to take part in an interview or you can contact them on 07919 035899, marthasrule.study@bthft.nhs.uk. They will arrange a date and time if you decide to go ahead. Thank you for taking the time to read this easy read information.